

# Quick

Made in USA


PAT.  
**IMPRINT SYSTEMS, INC.**  
U.S. PATENT NO. 5,033,906 WITH OTHER PATENTS PENDING



32 Blackstock Lane • Goodman, MO 64843 • Office (417) 364-8215 • FAX (417) 364-7630  
www.quickimprint.com • www.concreteroller.com • 1-800-746-8820



Extreme Makeover Home Edition  
Camp Barnabas - Bunk House  
Red, Clear & Black Noble Coat



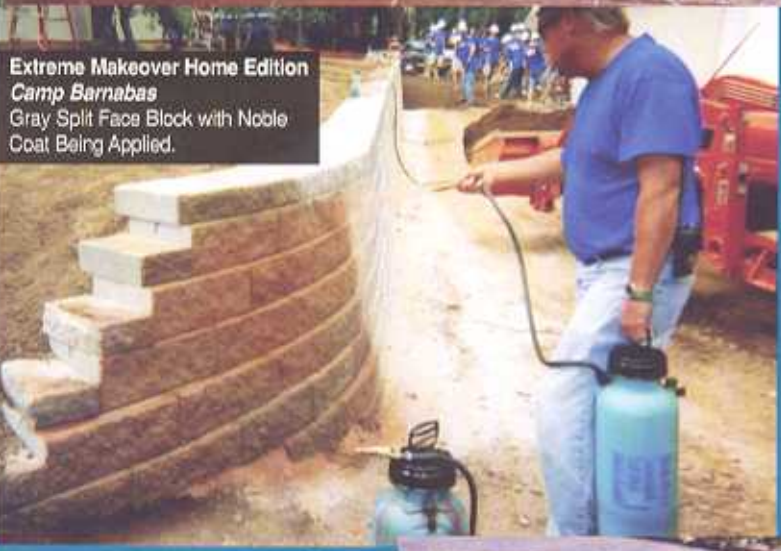
Casino Interior Floors - Single Brick Soldier &  
OI Design. Green, Gold, Brown, Black & Clear  
Noble Coat.



Cobblestone Drive with Double  
Brick Soldier, Single Brick Soldier  
Sidewalk with Brown, Black &  
Clear Noble Coat



Commercial Stone Slab Paver with Single Brick Soldier



Extreme Makeover Home Edition  
*Camp Barnabas*  
Gray Split Face Block with Noble Coat Being Applied.



Gold, Red & Brown Noble Coat After Application



Mixture of Green & Black Noble Coat creates Emerald Green.



Flagstone Pattern Clear Gold, Brown and Black. Individual Colored Stones with Overtone.



Achieve Serpentine Designs with Quick Imprint Rollers

Cobblestone Pattern with Clear & Black Noble Coat for Antiqued Look



Interior Living Quarters for Fire in Springfield Missouri



Driveway  
Cobblestone & Double  
Brick Soldier with Clear,  
Black & Red Noble Coat



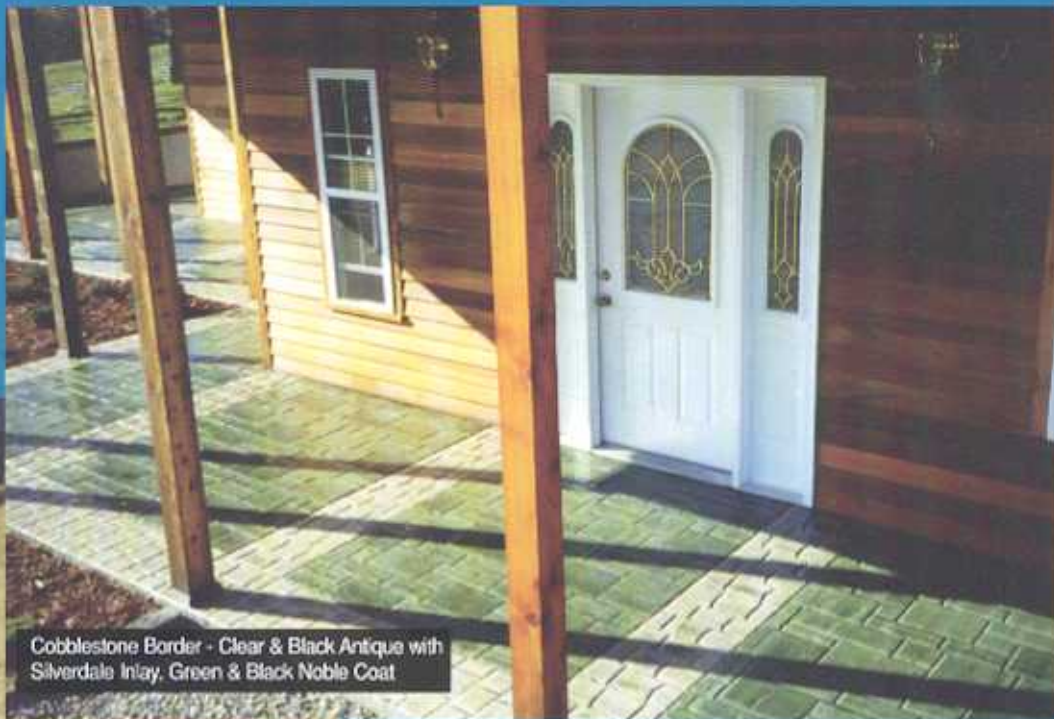
Silverdale Pattern with Red &  
Clear Noble Coat



Commercial Shopping Mall  
with Silverdale Pattern and  
Brick Soldier Border



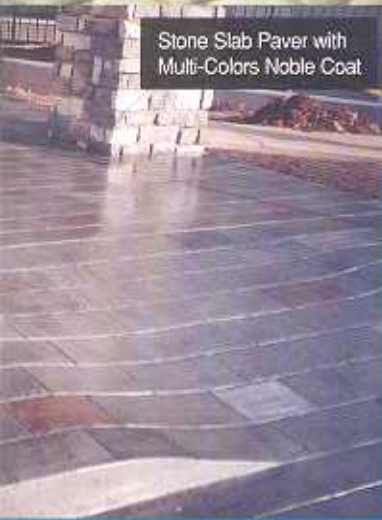
Station



Cobblestone Border - Clear & Black Antique with Silverdale Inlay, Green & Black Noble Coat



Flagstone Pattern



Stone Slab Paver with Multi-Colors Noble Coat



Commercial Parking Lot, Cobblestone, Poured 5,000 Square Feet November 1991, Flaw Free November 2005



Before

Flagstone Walls with Cobblestone Pillars Created with Flexible Oil Liners

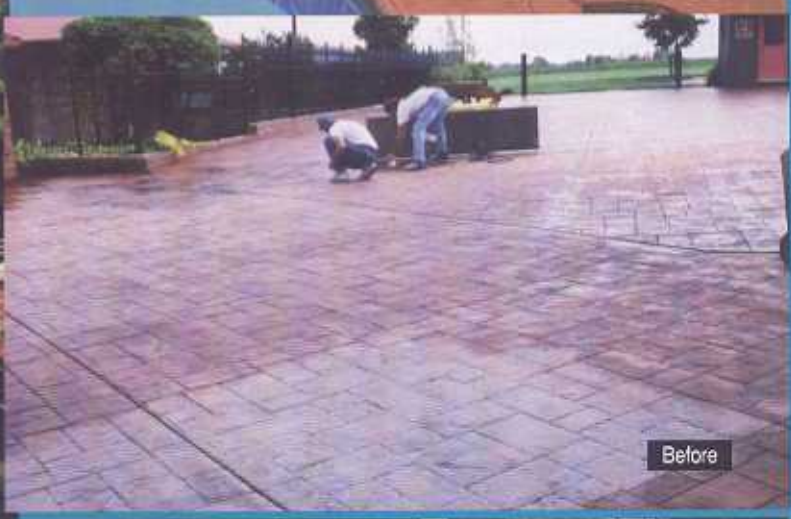


After

Red, Brown, Gold & Clear Noble Coat



Decorative Design & Coloring. Gold, Red, Brown, Green, Black and Clear Noble Coat.



Before



Extreme Makeover Home Edition  
Camp Barnabas  
Noble Coat, Red & Black Plus Clear Applied as Cure & Seal. Same Day as Pour



After  
Re-Color Seal & Highlight Using Red, Black & Clear Noble Coat on Existing Stamped Concrete.



Cobblestone

Stone Slab Paver



Brick Soldier



Structural Concrete, Hand Casted

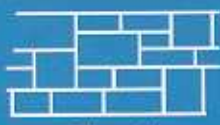
With QI Flexible Mats/Liners Creates Silverdale Design



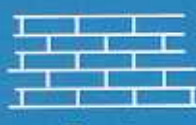
QI Designed Rock Cleft & Trees, Sculpted in Place - No Forms. 500PSI Concrete, 1750 lbs Sand, 1320 3/4 Aggregate, 496 lbs Cement, 74 lbs Fly Ash, No Water Reducer



Random Cobblestone



Silverdale Slate



Running Bond Brick



Flagstone



Random Stone Slab



Brick Pinwheel

New 16" Textured Border Rollers

New 36" Textured Rollers

Matching Textured Mats



## Quick Imprint Concentrated Noble Coat



2 coats Brown - 2 coats Clear



2 coats Red - 2 coats Clear



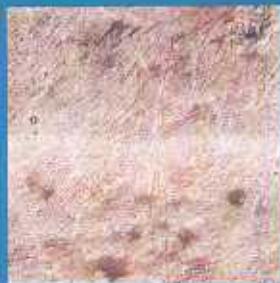
2 coats Green - 2 coats Clear



2 coats Black - 2 coats Clear



3 coats Gold - 2 coats Clear



2 coats Brown - 1 coat Red - 2 coats Clear



2 coats Red - 1 coat Black - 2 coats Clear



2 coats Green - 1 coat Brown - 2 coats Clear



2 coats Black - 1 coat Red - 2 coats Clear



2 coats Gold - 1 coat Brown - 2 coats Clear



2 coats Brown - 1 coat Black - 2 coats Clear



2 coats Red - 1 coat Green - 2 coats Clear



2 coats Green - 1 coat Black - 2 coats Clear



2 coats Black - 1 coat Brown - 2 coats Clear



2 coats Gold - 1 coat Black - 2 coats Clear